

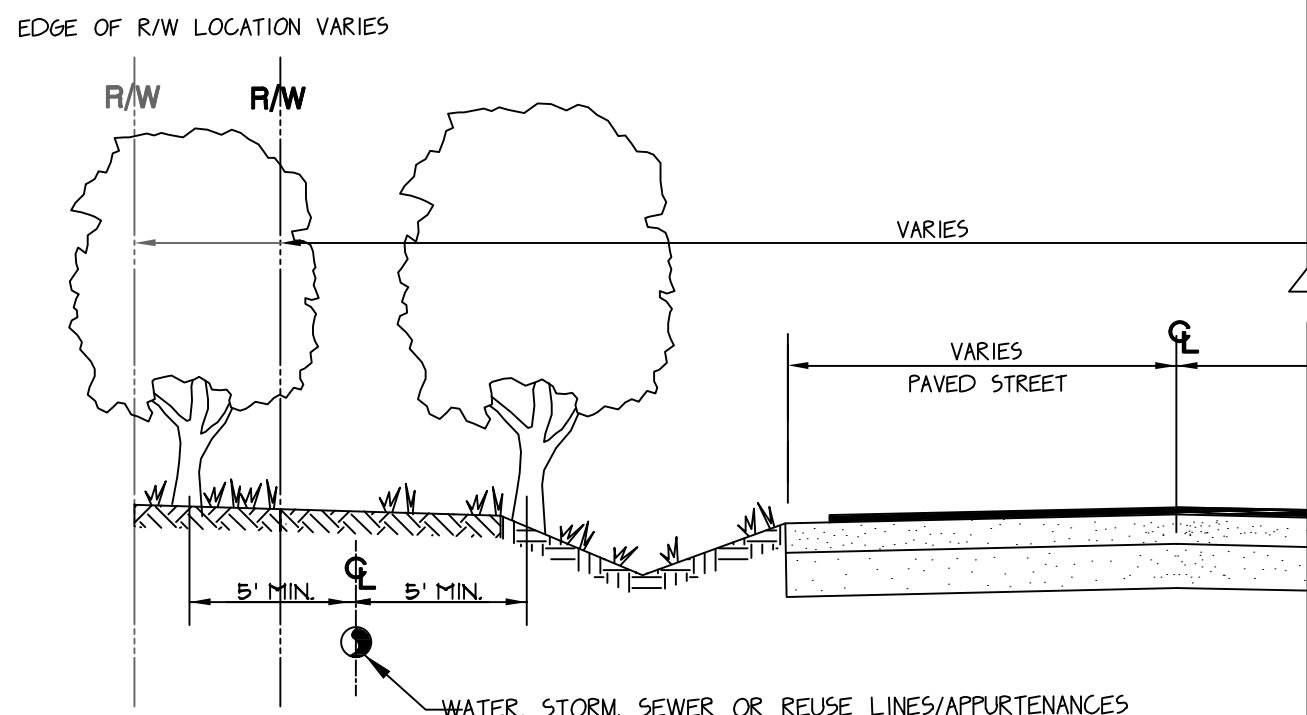
## TYPICAL SCREEN FOR UTILITIES

## NOTES

PLEASE NOTE THAT AS PER CITY ORDINANCE(S) 50.02(A) (4) AND 100.35(E), STREET TREES SHALL NOT BE PLACED ON TOP OF OR 5' OF EITHER SIDE OF ANY CITY OWNED UTILITY INFRASTRUCTURE. ALSO, PLEASE NOTE THAT NO TREES SHRUBBERY OR OBSTRUCTION SHALL BE PLACED WITHIN A 3' RADIUS OF A CITY OWNED LATERAL CLEANOUT OR WATER & OR REUSE METER.

## ENGINEERING STANDARDS 2022

|               |            |   |                              |                |       |
|---------------|------------|---|------------------------------|----------------|-------|
| REVISIONS     |            | ENGINEERING DIVISION<br>CITY OF POMPAÑO BEACH | TYPICAL SCREEN FOR UTILITIES |                |       |
| BY            | DATE       |   | APPROVED BY:                 | DATE: MAY 2022 |       |
| TCW           | APRIL 2010 |   |                              | DWG. NO.       | 315-1 |
|               |            |   |                              |                |       |
|               |            |   |                              |                |       |
| SCALE: N.T.S. |            |   |                              |                |       |



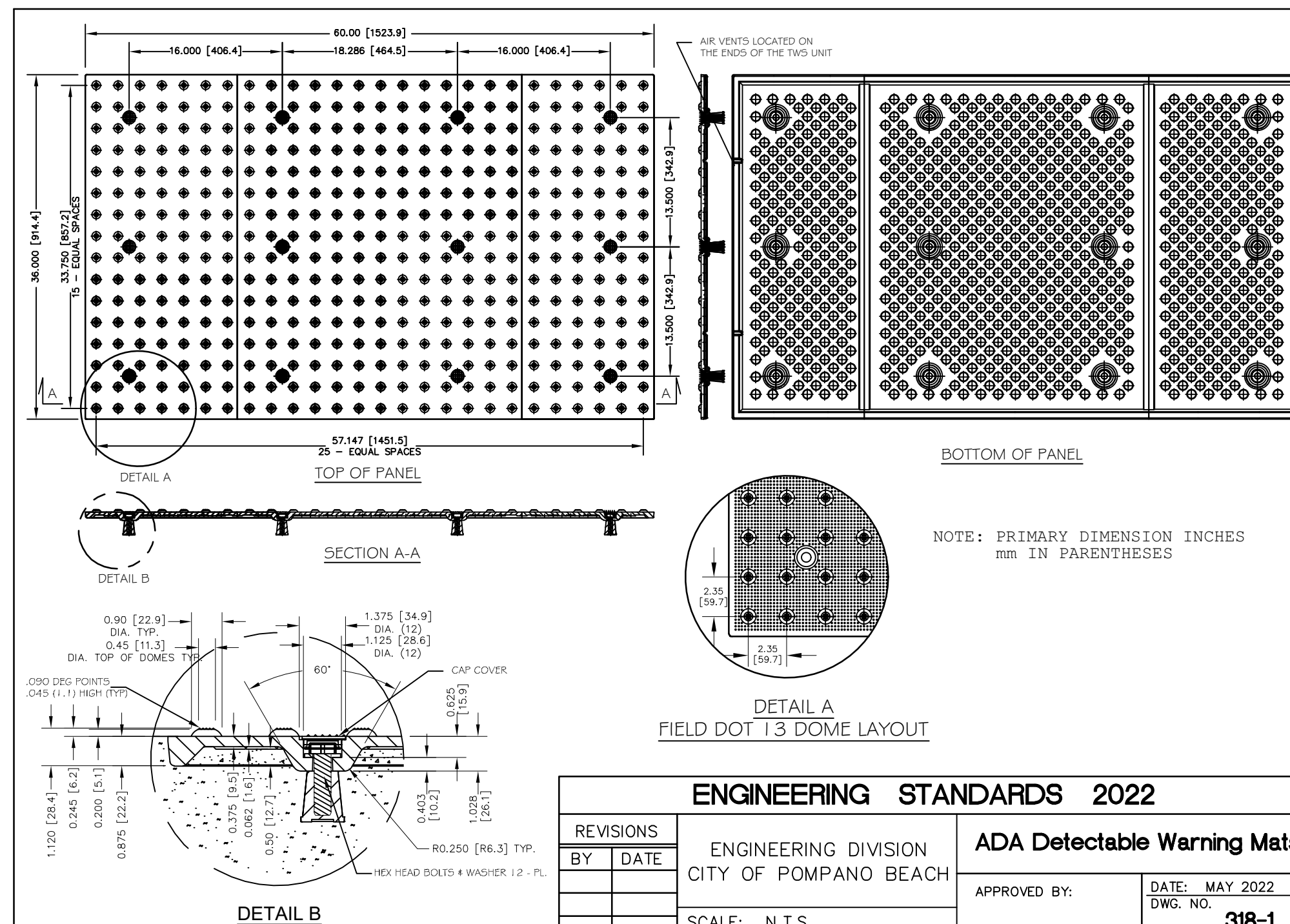
## TREE LOCATIONS REQUIRED IN PUBLIC R/W ON UTILITY EASEMENTS

## NOTES

PLEASE NOTE THAT AS PER CITY ORDINANCE(S) 50.02(A) (4) AND 100.35(E), STREET TREES SHALL NOT BE PLACED ON TOP OF OR 5' OF EITHER SIDE OF ANY CITY OWNED UTILITY INFRASTRUCTURE. ALSO, PLEASE NOTE THAT NO TREES SHRUBBERY OR OBSTRUCTION SHALL BE PLACED WITHIN A 3' RADIUS OF A CITY OWNED LATERAL CLEANOOUT OR WATER & OR REUSE METER

## ENGINEERING STANDARDS 2022

|               |      |   |                         |   |
|---------------|------|---|-------------------------|---|
| REVISIONS     |      | ENGINEERING DIVISION<br>CITY OF POMPAÑO BEACH | REQUIRED TREE LOCATIONS |   |
| BY            | DATE |   |                         |   |
|               |      |   | APPROVED BY:            | DATE: MAY 2022<br>DWG. NO. <b>316-1</b> |
|               |      |   |                         |   |
|               |      |   |                         |   |
|               |      |   |                         |   |
| SCALE: N.T.S. |      |   |                         |   |



## ENGINEERING STANDARDS 2022

|          |      |   |                             |                |
|----------|------|---|-----------------------------|----------------|
| REVISONS |      | ENGINEERING DIVISION<br>CITY OF POMPANO BEACH | ADA Detectable Warning Mats |                |
| BY       | DATE |   | APPROVED BY:                | DATE: MAY 2022 |
|          |      |   |                             | DWG. NO.       |
|          |      |   |                             | 318-1          |
|          |      |   |                             |                |
|          |      | SCALE: N.T.S.                                 |                             |                |



**301 East Atlantic Blvd.  
Pompano Beach, FL 33060  
PH: (954) 788-3400**

Florida Engineering Business License: CA7928  
Florida Surveyor and Mapper Business License: LB6860  
Florida Landscape Architecture Business License: LC260004

## REVISIONS

[illegible]

**RESPONSIBILITY FOR THE USE OF THESE  
PLANS PRIOR TO OBTAINING PERMITS FROM  
ALL AGENCIES HAVING JURISDICTION OVER  
THE PROJECT WILL FALL SOLELY UPON THE  
USER.**

ISSUE DATE: 07/30/2014

DESIGNED BY: NV

DRAWN BY: CD

CHECKED BY: NV

**BID-CONTRACT:**

This item has been  
digitally signed  
and sealed by  
**NILES T.  
WARRICK, P.E.**  
on the date  
adjacent to the  
seal.

Printed copies of this document are not considered signed and sealed and the signature must be verified on any electronic document.

STATE OF FLORIDA  
PROFESSIONAL ENGINEER

00-24-07-30 12:16:22-04'00'

**NILES T. WARRICK, P.E.**  
**FLORIDA REG. NO. 94320**  
**(FOR THE FIRM)**

**CLIENT**

VINCENTO  
THROWER, THOMAS  
GRANER TRUSTEE

PROJECT

**2851 DR. MLK JR.  
BLVD., POMPANO  
BEACH**

**SHEET TITLE**

## PAVING, GRADING, DRAINAGE, AND UTILITY DETAILS

**SHEET  
NUMBER** **CP-503**

|                |          |
|----------------|----------|
| PROJECT NUMBER | 14232.00 |
|----------------|----------|

STATIIS. PREI MINARY